



VC-TR40

AI Auto-Tracking Camera

AI

1080p

20x

PoE

Lumens® VC-TR40 is a dual-lens auto-tracking camera. Its AI-powered human face recognition technology makes it easier than ever to keep track of the subject. The TR40 features a 1080p 60fps image processor and 20x optical zoom lens with auto-framing technology that intelligently zooms to capture all guests in view.

Lumens VC-TR40 can follow a subject smoothly and reliably, making it ideal for use in presentations, studios, and lecture halls.

Key Features

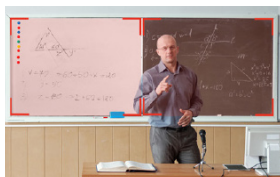


- AI-Powered Human Face Recognition
- 3 Tracking modes and 2 Framing modes
- 1080P 60fps with 20x Optical Zoom
- HDMI, Ethernet, 3G-SDI and USB simultaneous output
- Supports RTSP / RTMP / RTMPS / SRT streaming
- 5-year warranty*



Everywhere Tracking Mode

The camera will follow wherever the presenter goes. You can simply change the tracked subject by clicking on the individual via the web interface.



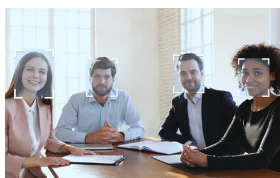
Partition Tracking Mode

When the presenter moves inside a user-defined Partition Area, the camera switches to a preset angle and zoom. When outside a Partition Area, the camera autonomously follows the presenter.



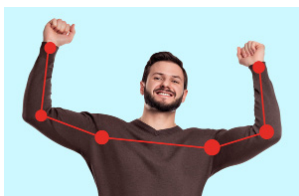
Stage Tracking Mode

When inside the Tracking Area, the camera follows the presenter with only a pan (left-right) movement. When the presenter moves outside the Tracking Area, the camera stops following.



Auto-Framing Mode

With Auto-framing function, you can immediately detect the participants in a meeting. It dynamically adjusts its angle frame to include all delegates, re-framing the view if participants join or leave during the session.



Easy to Control

The VC-TR40 features advanced gesture control. When the presenter raises their hands, you can switch the tracking target without user input. You can also manually change the tracked subject by clicking on the individual via the web interface.

Applications



Lecture Capture



Corporate Training



Houses of Worship

Product Specifications

PTZ Camera	
Sensor	1/2.8" 2MP CMOS
Video Format	1080p : 60 / 50 / 30 / 25 720p : 60 / 50
Video Output (HD) Interface	HDMI / Ethernet / 3G-SDI / USB 3.0
Optical Zoom	20x
Digital Zoom	12x
Viewing Angle	58.7° (H) / 33° (V) / 67.3° (D)
Aperture	F1.6~F2.8
Focal Length	4.9mm ~ 94mm
Shutter Speed	1/25 ~ 1/10,000 sec
Minimum Object Distance	500mm
Video S/N Ratio	> 50dB
Minimum Illumination	1.0 lux (F1.6, 50IRE, 30fps)
Focus System	Auto / Manual
Gain Control	Auto / Manual
White Balance	Auto / Manual
Exposure Control	Auto / Manual
WDR	Yes
3D NR	Yes
Image Flip	Yes
Auto-Tracking	Everywhere / Stage / Partition
Auto Framing	Everywhere / Partition
Gesture Control	Yes
Panoramic camera	
Sensor	1/2.8" 2MP CMOS
Video Format	720p30
Viewing Angle	111° (H) / 62° (V)
Aperture	F2.4
Focal Length	3.1mm

Pan & Tilt	
Panning Angle	+170° ~ -170°
Panning Speed	0.2° ~ 120°/sec
Tilting Angle	+90° ~ -30°
Tilting Speed	0.2 ~ 80°/sec
Preset Positions	256
Output	
HDMI / 3G-SDI	1080p60
IP Stream	PTZ Camera Main : 1080p 60 Second : 720p 30 Panoramic Camera : 720p30
IP Compression	H.264
USB Output	1080p60
USB Compression	MJPEG
Network	
IP Protocol	HTTP / RTSP / RTMP / RTMPS / SRT
PoE	PoE (IEEE802.3af)
Audio	
Audio Input	Line In / MIC In
Audio Output	Ethernet / USB 3.0 / HDMI / SDI
Audio Compression Format	USB : PCM
Camera Control	
Interface	RS-232 / Ethernet / USB 3.0
Protocol	VISCA / PELCO D / ONVIF / UVC
General	
DC In	12V +/- 20%
Power consumption	PoE : 11W DC In : 10W
Body Color	Black / White
Weight	3.3 lbs (1.5 kg)
Dimension	7.5" x 7.3" x 5.4" (190 x 185 x 138 mm)

I/O Connections



Lumens Integration, Inc.
4116 Clipper Court
Fremont, CA, 94538
Phone: +1-866-600-0988
Fax: +1-510-252-1389

Lumens Europe
De Nayerstraat 17 9470
Denderleeuw Belgium
Phone : +32-473-58-38-95
Fax : +32-2-452-76-00



www.MyLumens.com