

Lumens®



VC-A71P 4K IP PTZ Camera



Advanced UltraHD pan tilt and zoom camera with 12G-SDI, IP, and HDMI outputs.

Lumens VC-A71P is a broadcast-quality UHD PTZ camera. Paired with a low distortion professional zoom lens, the camera's large (1/1.8") CMOS sensor produces superb 4K and HD results. Its excellent color reproduction and 12G-SDI output mean it's a great choice for productions where image quality is of the highest importance. The VC-A71P is a practical solution for broadcasting, video production, lecture recording and live events.

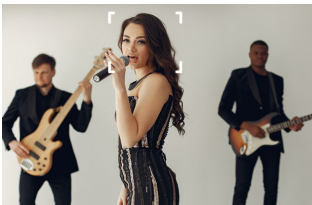
Key Features

- Professional 1/1.8" Sony sensor
- 4K UHD 60fps and 30x optical zoom
- Smart AF: AI-enabled autofocus system
- FreeD protocol for live VR/AR production
- 12G-SDI, HDMI, Ethernet (PoE++) and USB 3.0 outputs
- 5-year warranty*



Live VR/AR Video Production

VC-A71P supports the popular FreeD protocol which outputs the camera's positional data over IP in real-time. This enables users to work with state-of-the-art Virtual Reality and Augmented Reality sets without the need for additional sensors.



Face Recognition Autofocus System

Equipped with Lumens' Smart AF algorithm, VC-A71P can intelligently identify human faces and automatically detect the eyes and mouth. This enables the camera to keep the subject in sharp focus all the time.



Easy Operability & Fast Communication

With a top-mounted tally light, the VC-A71P notifies the crew and talent which camera is currently in use. It provides clear communication and is especially useful in multi-camera productions and broadcast studios.



High-Precision Camera Position

With high-precision motor control and Lumens' advanced transmission mechanism, the VC-A71P achieves high-speed pan and tilt at up-to 300° per second. Camera movement is smooth and judder-free, even at low speeds.

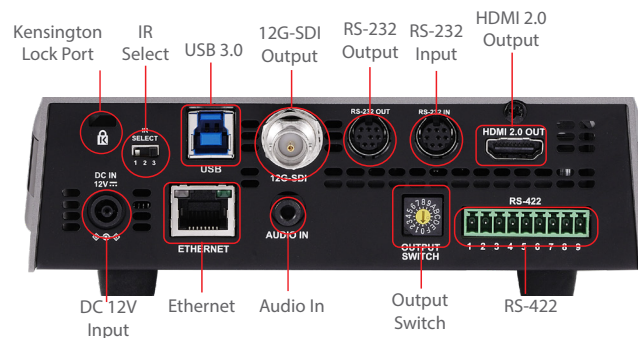


Product Specifications

Camera	
Sensor	1/1.8" 9.17 MP CMOS
Video Format	2160p: 59.94 / 50 / 29.97 / 25 1080p: 59.94 / 50 / 29.97 / 25 1080i: 59.94 / 50 720p: 59.94 / 50 / 29.97 / 25
Video Output (HD) Interface	12G-SDI / HDMI 2.0 / Ethernet / USB 3.0
Optical Zoom	30x
Digital Zoom	12x
Viewing Angle	63° (H) 35.4° (V) 72.3° (D)
Aperture	F1.6 ~ F4.8
Focal Lengthst	6.5mm ~ 202mm
Shutter Speed	1/1 ~ 1/10,000 sec
Minimum Object Distance	1.5m (Wide/Tele)
Video S/N Ratio	> 50dB
Minimum Illumination	0.05 lux (F1.6, 50IRE, 30fps)
Focus System	Auto / Manual / Smart AF
Gain Control	Auto / Manual
White Balance	Auto / Manual
Exposure Control	Auto / Manual
WDR	Yes
3D NR	Yes
Image Flip	Yes
Color Space	Standard / BT.2020 / REC.709
AR/VR Systems	FreeD
Tally Light	Yes
Pan & Tilt	
Panning Angle	+170° ~ -170°
Panning Speed	300°/sec
Tilting Angle	+90° ~ -30°
Tilting Speed	300°/sec
Preset Positions	256

Output	
HDMI / 12G-SDI	2160p59.94
IP Stream	HEVC 4K 59.94fps H.264 1080p 59.94fps H.264 640x360 29.97fps
IP Compression	HEVC(H.265) / H.264
USB Output	H.264 4K30fps MJPEG 1080p30
USB Compression	H.264 / MJPEG
Network	
IP Protocol	RTSP / RTMP / RTMPS / MPEG-TS / SRT
PoE	PoE++ (IEEE802.3bt)
Audio	
Input	Line In / MIC In, Phone Jack 3.5mm x1
Output	Ethernet / 12G-SDI / HDMI 2.0 / USB
Compression Format	IP: G.711 / USB: PCM
Camera Control	
Interface	RS-232 / RS-422 / Ethernet / USB 3.0 / Remote
Protocol	VISCA / VISCAIP / PELCO D / ONVIF
UVC	1.1
UAC	Yes
General	
DC In	12V +/- 20%
Power Consumption	PoE: 27.5 W DC In: 27 W
Weight	6.6 lbs (3 kg)
Dimension	9.2" x 7.4" x 7.4" (232 x 188 x 189 mm)

I/O CONNECTIONS



Lumens®

Lumens Integration, Inc.
4116 Clipper Court
Fremont, CA, 94538
Phone: +1-866-600-0988
Fax: +1-510-252-1389

Lumens Europe
De Nayerstraat 17 9470
Denderleeuw Belgium
Phone : +32-473-58-38-95
Fax : +32-2-452-76-00



www.MyLumens.com